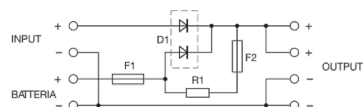
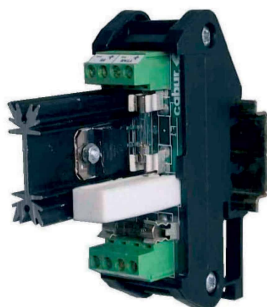
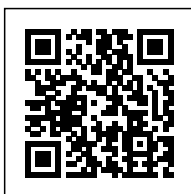


DC-UPS IN: 12-24 Vdc / OUT: 12-24 Vdc 10 A



Series	
Code	XCSBC
Type	CSBC
HS code	85044083
INPUT TECHNICAL DATA	
Input rated voltage	12-24 Vdc
Input voltage DC	6...30 Vdc
Current consumption	> 3 A
OUTPUT TECHNICAL DATA	
Output voltage range	12-24 Vdc
Output adjustable range	Vin-0.2 normal operation / Vbatt-0.2 battery operation (max. 29 Vdc)
Continuous current	10 A at 45°C
Battery safety fuse	Fuse: 6.3 A replaceable
Battery type	Lead-Acid
Battery capacity	max. 4 Ah (12 Vdc) / max. 10 Ah (24 Vdc)
Charging current	0.5 A (12 Vdc) / 1 A (24 Vdc)
Battery disconnection voltage	function not present
Protection	short-circuit / battery overload
GENERAL TECHNICAL DATA	
Efficiency	88%
Dissipated power	7.5 W (12 Vdc) 15 W (24 Vdc)
Operating temperature range	-20...+50°C
Overvoltage category / pollution degree	II / 2
Protection degree	IP 00
Connection terminal	2.5 mm <sup>2</sup> / 2.5 mm128
Housing material	UL94V-0 plastic material
Dimensions (LxHxD)	26x80x93 mm
Approximate weight	80 g
Mounting information	vertical on a rail, 10 mm from adjacent components
ACCESSORIES	
Mounting rail (IEC60715/TH35-7.5)	PR/3/AC, PR/3/AC/ZB, PR/3/AS, PR/3/AS/ZB
Mounting rail (IEC60715/TH35-15)	PR/3/PP, PR/3/PP/ZB, PR/3/PA, PR/3/PA/ZB
APPROVALS AND MARKINGS	
	CE



\*: Connected to a DC line, allow to supply loads and charge the backup battery | \*: Suitable for Lead-Acid batteries | \*: Suitable for power supplies with adjustable output |  
1: Please refer to the datasheet or operating instruction for more details | 2: In order to complete the charge, the DC output of the power supply must be 2-3V more than nominal voltage of the battery | 3: XCSBC does not prevent deep discharge of the battery |

## DESCRIZIONE DEL PRODOTTO

DC-UPS IN: 12-24 Vdc / OUT: 12-24 Vdc 10 A