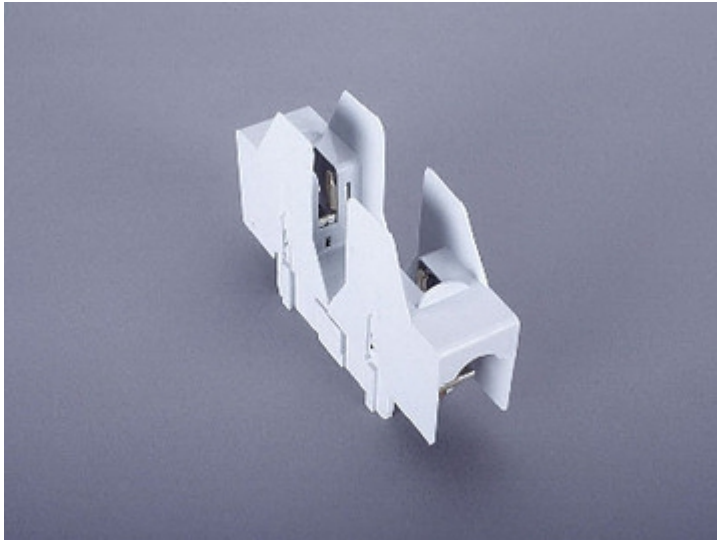


## NH fuse-base 160 A (03758)



The picture may show a similar product.

### Description

Part No.: 03758

QUADRON® Panel

NH fuse-base 160 A

both sides screw M8

size 00 / 1P, with touch protection

### System

Mounting plate

### Advantages of the product

For safe connection of the leads, the shock protection is split into 2.

Product group 10

Subgroup 03

pack size 12

EAN 4021267037581

catalog page 2020 : 6.11

eCl@ss 6.1 27142106

eCl@ss 7.1 27142106

ETIM 4.0 EC000067

ETIM 5.0 EC000067

## Approvals

### Standards

IEC 60269-1:2006 + A1:2009 + A2:2014

IEC 60269-2:2013

GB/T 13539.2

### Approvals

DNV GL , EAC



type number: NH-00

EAC Type: NH

## Technical data

for fuse links size: NH 000, NH 00

fuse links acc. to standard: IEC / HD 60269-2

permitted power dissipation of the fuse-link: 12 W

### Details IEC

#### Standards

IEC 60269-1:2006 + A1:2009 + A2:2014

IEC 60269-2:2013

GB/T 13539.2

#### Electrical data IEC

Rated current (IEC): 160 A

rated voltage (IEC) AC: 690 V

rated voltage (IEC) DC: 440 V

rated surge voltage  $U_{imp}$  : 6 kV

The insulation performance of the article depends on the installation conditions.

short-circuit strength when protected by fuses: 50 kA

power dissipation of the article:

The power dissipation at a typical load of 80 % results to 2.7 W.

(The power dissipation at full load would be 4.2 W.)

### Supplementary data IEC

The following values have been verified with tests under certain conditions. Please ask Wöhner for this conditions before designing your panel.

max. permitted voltage (IEC) AC: 1000 V

max. permitted voltage (IEC) DC: 1000 V

for fuse links IEC 60269-2 / DIN VDE 0636-201 size 00 up to 12W power dissipation

### Mechanical data

W x H x D: 36 x 147 x 88

weight: 15.2 kg/100

poles: 1-pole

screw connection M8, 8 - 10Nm torque

### Terminal points

Not suitable for aluminium cables !

NHUT\_SCHRAUBE\_M8

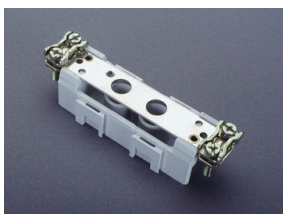
## Accessories



**03502**  
NH fuse extractor handle  
without sleeve  
size 000 - 3



**03519**  
neutral conductor 160 A  
screw M8 at both sides



**03620**  
neutral conductor 160 A  
clamp, both sides



**79448**  
grip lug cover  
for NH base and 33705  
NH 00