

Cabur Plotter System

Cat. No. KSLOTTER

The CABURPLOT system consists of a flatbed A3 plotter which, **on a single plate**, lets you print on:

- sleeve tags to identify cables
- tags for terminal blocks
- tags for push-buttons
- tags for contactors
- modular strips for electrical distribution panels
- panel identification tags

The aluminium frame and innovative design, as opposed to other solutions available on the market, make CABURPLOT a leading, state-of-the-art system. Compared to similar products, CABURPLOT pens last longer. In addition to the classic, anti-dry pen, we've added an extra feature built into the system: a **special airtight pen holder**, which prevents accidental tampering and laborious manual operations outside the system.



TECHNICAL DATA

- Type: flat base plotter
- Printing area: 440 x 305 mm
- Pen holder: 4
- Power supply: separate power supply unit
- Input voltage: 100 – 240 V A.C. 50 – 60 Hz
- Output Voltage: 24 V D.C.
- PC interface: parallel and USB 1.1
- Dimensions: 660 x 440 x 125 mm
- Weight: 8 Kg

The package includes:

- 1 KSLOTTER plotter + power supply unit + parallel cable + USB cable
- 1 code adaptation plate PADCABUR
- 1 anti-dry pen, diameter 0.35 mm
- 1 pack of 5 indelible black ink cartridges
- 1 MarKing Pro Software on CD, including a licence for 5 installations and complete user manual in electronic format

Accessories

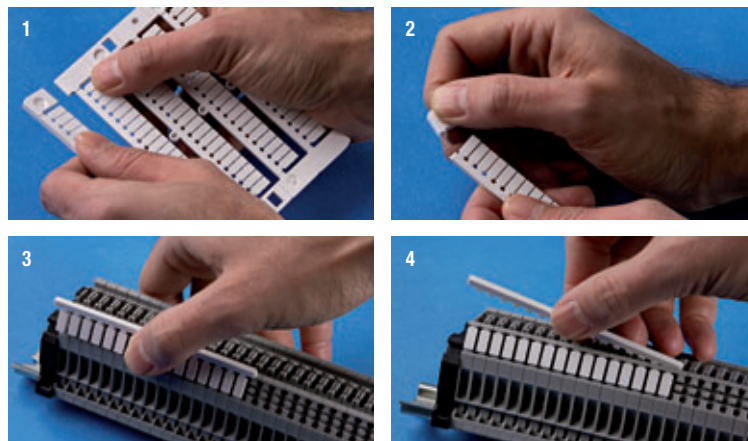
Cat. No.	Description
PADCABUR	Adaptation plate for KSLOTTER plotter
PADGRAPH	Adaptation plate for Graphtec plotter
PADMUTHO	Adaptation plate for MUTOH plotter
PEN025CAB	Anti-dry pen for plotter – diameter 0.25 mm
PEN035CAB	Anti-dry pen for plotter – diameter 0.35 mm
PEN035GRA	Anti-dry pen for Graphtec plotter – diameter 0.25 mm
INKCART5	Indelible ink (5 cartridges per pack)
INKBOTT1	30 ml bottle of ink
KITPULIZIA	Pen cleaning kit
POMPASP	Pen reactivator



PLOTTER PLATES

Cat. No.	Type	Descrizione
ADRKITEK	KITCABUREK	MarKing Pro SW + EK-TEAM VP-500 plotter plate
ADRKITGR	KITCABURBG	MarKing Pro SW + GRAPHTEC plotter plate
ADRKITMU	KITCABURMU	MarKing Pro SW + MUTOH IP-220 plotter plate

MOUNTING ON CABUR TERMINAL BLOCKS



BLANK PLOTTER TAGS

Type	Cat. No.	Tag length	Tags for module/pk	Terminal blocks series
CNU/8/51	NU0851	8 mm	100/1500	CBC.2, HMM.2
CNU/8/61	NU0861	8 mm	80/1200	CBC.4, HMM.4
CNU/10/51	NU1051	10 mm	100/1500	CBC.2, HMM.2
CNU/10/61	NU1061	10 mm	80/1200	CBC.4, HMM.4
SHZ.1	SH004	10 mm	100/1500	HMM.1

