

End brackets

BTU

Cat. No. **BT005**

Universal end bracket, suitable for rails according to either IEC 60715 type "G32" or IEC 60715/TH35 (types PR/DIN and PR/3); can be mounted directly in the desired position and does not require screw fixing.

- of black polyamide
- thickness: 8 mm



BT0

Cat. No. **BT007**

End bracket, suitable for rails according to IEC 60715/TH 35 (types PR/3); can be mounted directly in the desired position and does not require screw fixing. Especially suitable for fixing screw, high type.

- of black polyamide
- thickness: 8 mm



BT/3

Cat. No. **BT003**

To be mounted on rails according to IEC 60715/TH35 Std. (type PR/3)

- of black polyamide
- thickness: 8 mm



BT/2

Cat. No. **BT006**

To be mounted on rails according to IEC 60715/TH35 Std. (type PR/2)

- of black polyamide
- thickness: 8 mm

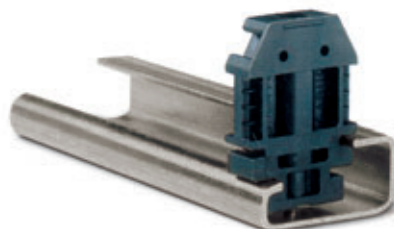


BT/DIN/PO

Cat. No. **BT001**

To be mounted on rails according to IEC 60715 Std. type "G32" (type PR/DIN)

- of black polyamide
- thickness: 8 mm



CDA/BT

Cat. No. **CD003**

To be mounted on rails according to IEC 60715 Std. type "G32" (type PR/DIN)

- in brass (particularly suitable for rail assemblies formed by terminal blocks of larger dimensions, such as GPM, GPA, CDA and ACB)
- thickness: 11 mm

